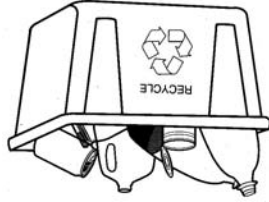


How Do I Recycle?



Recyclable materials can be brought to the Scott County Transfer Station Monday through Friday from 8:00 AM to 4:30 PM, as well as the second Saturday of each month from 8:00 AM to 4:00 PM

A quick rinse is recommended for cans and plastic bottles to reduce odor and avoid attracting pests. Remove lids from cans and flatten to save space.

Keep paper separate to keep it dry.

What Can I Recycle?

There are 2 large blue bins for recyclables. One for containers; the other for paper items

Items accepted in the *Containers Bin*

Include:

Aluminum Cans and Foil



With neck smaller than base, such as soda & water bottles, milk jugs, detergent & bleach bottles



Plastic Bottles

including aerosol cans



Steel/Tin Cans

NO carbon paper

NO telephone books

NO Kleenex or other bathroom papers or trash.

NO "neon" or dark colored papers.

NO cereal or tissue boxes or toilet paper rolls

The following items are **NOT** accepted:

Please Remove non-paper items such as plastic cards, soap samples, etc., from junk mail.



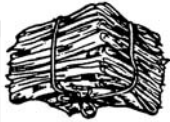
Opened Junk Mail
Including windowed envelopes.

No need to remove paper clips, tape, staples, stamps, address labels, rubber bands, or metal fasteners

Office Paper

Paper Grocery Bags

Magazines and Catalogs



Newspaper & Newspaper Inserts

Include:

Items accepted in the *Paper Bin*

Other items accepted by the attendant for recycling include:



Flattened Corrugated Cardboard



Tires



Scrap Metal

Including appliances with compressors removed

Household Hazardous Waste



Items such as paint, pesticides, and other household hazardous waste can also be brought to the recycling center. These "left-overs" are made available to residents in a "reuse" program. So remember to check the center the next time you need paint or chemicals for a small project. Avoid dumping such items in the trash or down the drain where they can cause injury and contaminate drinking water sources.

Why Should I Recycle?

Economic Benefit
A fully utilized recycling program will save the county thousands of dollars every year by reducing the cost of transporting unsorted waste to out-of-county landfills, as well as the dumping fees incurred once it gets there. Efficient use of our tax dollars benefits all residents of the county .

Recycling Creates Jobs
Recycling creates six times as many jobs as landfilling.

Conserve resources
Recycling a ton of paper saves 3700 lbs. of lumber and 24,000 gallons of water.

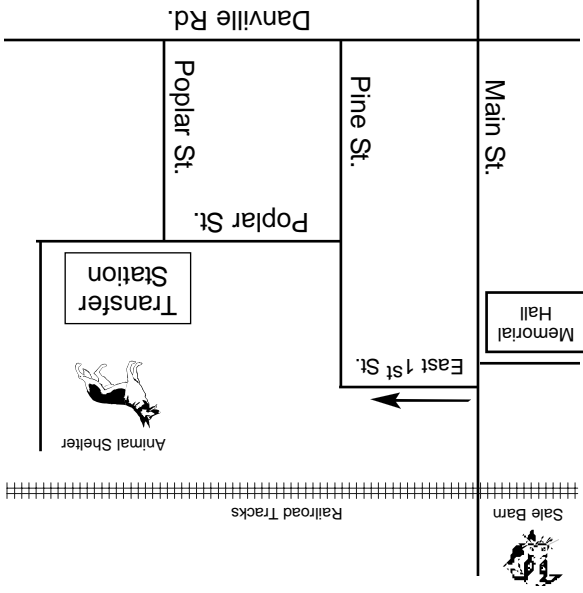
Save energy
The energy saved each year by steel recycling is equal to the electrical power used by 18 million homes each year.

Cleaner air and water
The process of making steel from recycled scrap, instead of raw ore, reduces the water and air pollution produced by 70%.

Community Pride
Recycling is the right thing to do!

Where Can I Recycle?

The Scott County Recycle Works is located in Waldron at the Scott County Transfer Station. It is just a few blocks east of Main Street off East First Street, just south of the railroad tracks.



Reduce and Reuse

As important as recycling are the concepts of reducing and reusing. Reduce your waste volume by buying fewer disposable products, by buying products with less packaging, and by requesting to be removed from unwanted junk-mail lists. Reuse clothing, books, and other items by donating to churches, the library, or nursing home, or by having a yard sale. Be creative!

Printed on 30% Post Consumer Recycled Paper through a grant from the Arkansas Dept. of Environmental Quality.

123 Poplar Street
P.O. Box 310
Waldron, AR 72958
479-637-2614



Scott County